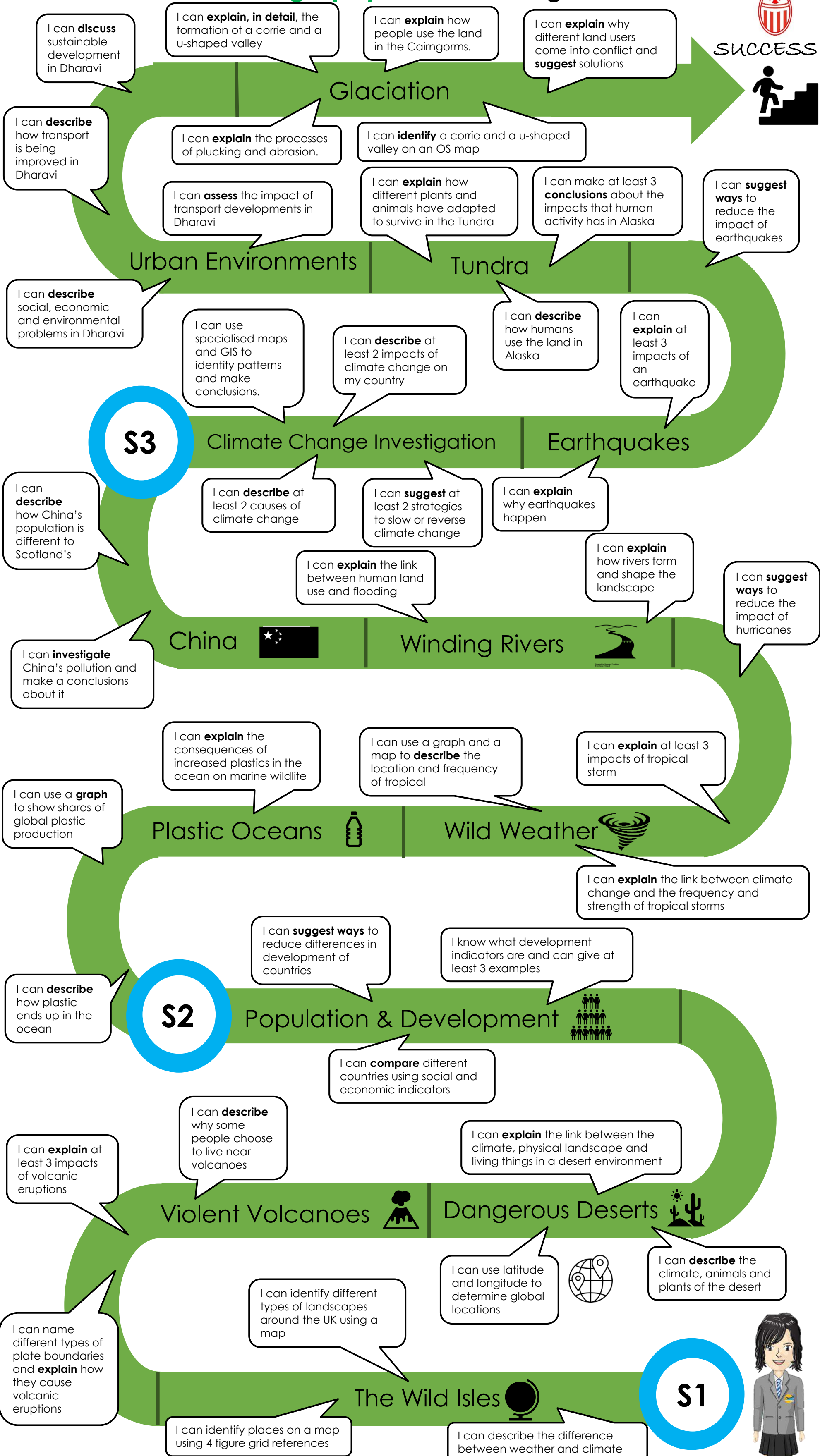


BGE Geography: Our Amazing World



SUCCESS!



BGE Outcome Tracking

Year	Unit	Outcome
S1	The Wild Isles	I can use a range of maps and geographical information systems to gather, interpret and present conclusions and can locate a range of features within Scotland, UK, Europe and the wider world. SOC 3-14a
	Violent Volcanoes	I can identify the possible consequences of an environmental issue and make informed suggestions about ways to manage the impact. SOC 3-08a I can use a range of maps and geographical information systems to gather, interpret and present conclusions and can locate a range of features within Scotland, UK, Europe and the wider world. SOC 3-14a
	Dangerous Deserts	I can investigate the climate, physical features and living things of a natural environment different from my own and explain their interrelationship. SOC 3-10a I can use a range of maps and geographical information systems to gather, interpret and present conclusions and can locate a range of features within Scotland, UK, Europe and the wider world. SOC 3-14a
	Population and Development	I can compare the social and economic differences between more and less economically-developed countries and can discuss the possibilities for reducing these differences. SOC 3-11a I can compare the population structure of Scotland with a contrasting country and can express informed views about the future implications for these societies. SOC 4-11c
S2	Plastic Oceans	
	Wild Weather	I can use a range of maps and geographical information systems to gather, interpret and present conclusions and can locate a range of features within Scotland, UK, Europe and the wider world. SOC 3-14a
	Winding Rivers	I can use a range of maps and geographical information systems to gather, interpret and present conclusions and can locate a range of features within Scotland, UK, Europe and the wider world. SOC 3-14a
	China	
S3	Climate Change Investigation	I can use a range of maps and geographical information systems to gather, interpret and present conclusions and can locate a range of features within Scotland, UK, Europe and the wider world. SOC 3-14a I can develop my understanding of the interaction between humans and the environment by describing and assessing the impact of human activity on an area. SOC 4-10a I can identify threats facing the main climate zones, including climate change, and analyse how these threats impact on the way of life. SOC 4-12a I can carry out a geographical enquiry to assess the impact and possible outcomes of climate change on a selected region and can propose strategies to slow or reverse the impact. SOC 4-12b I can use specialised maps and geographical information systems to identify patterns of human activity and physical processes. SOC 4-14a
	Earthquakes	I can identify the possible consequences of an environmental issue and make informed suggestions about ways to manage the impact. SOC 3-08a I can use a range of maps and geographical information systems to gather, interpret and present conclusions and can locate a range of features within Scotland, UK, Europe and the wider world. SOC 3-14a I can use specialised maps and geographical information systems to identify patterns of human activity and physical processes. SOC 4-14a
	Tundra	I can develop my understanding of the interaction between humans and the environment by describing and assessing the impact of human activity on an area. SOC 4-10a I can use specialised maps and geographical information systems to identify patterns of human activity and physical processes. SOC 4-14a
	Urban Environments	By comparing settlement and economic activity in two contrasting landscapes. I can reach conclusions about how landscapes influence human activity. I can explain my findings clearly to others. SOC 3-13a I can assess the impact of developments in transport infrastructure in a selected area and can contribute to a discussion on the development of sustainable systems. SOC 4-09b I can develop my understanding of the interaction between humans and the environment by describing and assessing the impact of human activity on an area. SOC 4-10a I can explain the development of the main features of an urban area in Scotland or elsewhere and can evaluate the implications for society concerned. SOC 4-10b
	Glaciation	I can explain how the interaction of physical systems shaped and continue to shape the Earth's surface by assessing their impact on contrasting landscape types. SOC 4-07a I can develop my understanding of the interaction between humans and the environment by describing and assessing the impact of human activity on an area. SOC 4-10a I can use specialised maps and geographical information systems to identify patterns of human activity and physical processes. SOC 4-14a